



GUILDFORD
BOROUGH

www.guildford.gov.uk

Tom Horwood
Joint Chief Executive of Guildford and
Waverley Borough Councils

Dear Councillor

PLANNING COMMITTEE - WEDNESDAY 1 FEBRUARY 2023

Please find attached the following:

Agenda No Item

9. **Presentations (Pages 1 - 44)**

Yours sincerely

Sophie Butcher, Democratic Services Officer

Encs

This page is intentionally left blank

21/P/01211

Land at May and Juniper Cottages

Ash Green Road

Ash

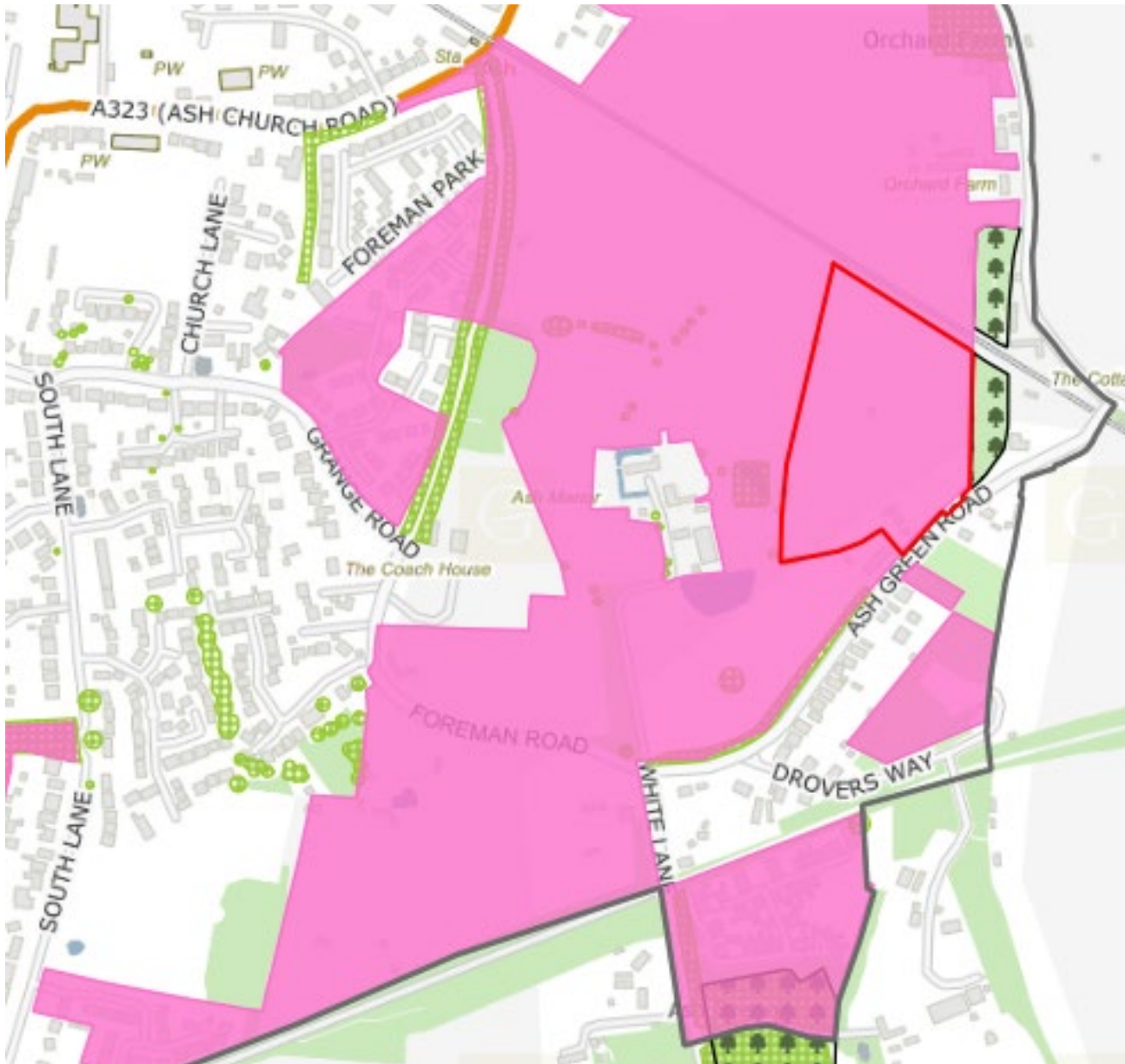
GU12 6JH

[Previous](#)

[Next](#)

[Home](#)







Site plan

[Previous](#)

[Next](#)

[Home](#)



Section A-A
Scale 1:200



Section A-A (continued)
Scale 1:200



Street scene A-A

Previous

Next

Home



Section B-B
scale 1:200
0 5 10 15 20 25 30 35 40 45 50 55 60 65 70 75 80 85 90 95 100



Section C-C
scale 1:200
0 5 10 15 20 25 30 35 40 45 50 55 60 65 70 75 80 85 90 95 100



Street scenes B-B and C-C

[Previous](#)

[Next](#)

[Home](#)



Street scenes D-D and E-E

Previous

Next

Home



Street scene F-F – Relationship with the Ash Manor Complex

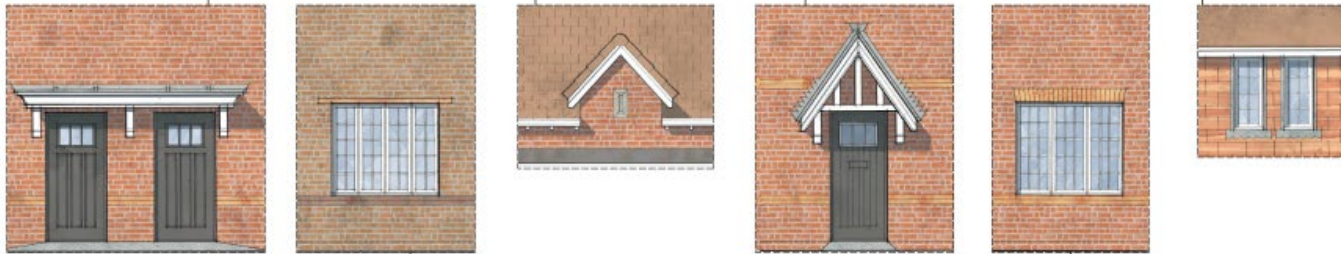
[Previous](#)

[Next](#)

[Home](#)



STREET SCENE: PLOTS 11-16



STREET SCENE: PLOTS 23-27

Plots 11 – 16 and 23 - 27

Previous

Next

Home



STREET SCENE EXTRACT: PLOTS 65-74



STREET SCENE EXTRACT: PLOTS 67-76

Plots 30 – 34 and 67 - 76

[Previous](#)

[Next](#)

[Home](#)



STREET SCENE EXTRACT: PLOTS 77-79



STREET SCENE EXTRACT: PLOTS 82-85

Plots 77 – 79 and 82 - 85

[Previous](#)

[Next](#)

[Home](#)



STREET SCENE EXTRACT: PLOTS 30-34



STREET SCENE B-B EXTRACT: PLOTS 67-76


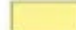

















Plots 30 – 34, 1 – 4 and 8 - 10

[Previous](#)

[Next](#)

[Home](#)



-  Site boundary
-  Development area
-  Open space
-  Existing buildings
-  Enclosed public spaces
-  On-site primary routes
-  Access to development areas
-  Key off-site routes
-  New roundabout
-  Access to Ash Manor only
-  Key pedestrian and cycle routes / PRoW
-  Ash Road bridge
-  Railway line
-  Railway station
-  Existing gypsy and traveller's site
-  Water bodies
-  Provision of flood compensation land (area subject to detailed assessment)
-  Allocated land not included in study area
-  Possible access

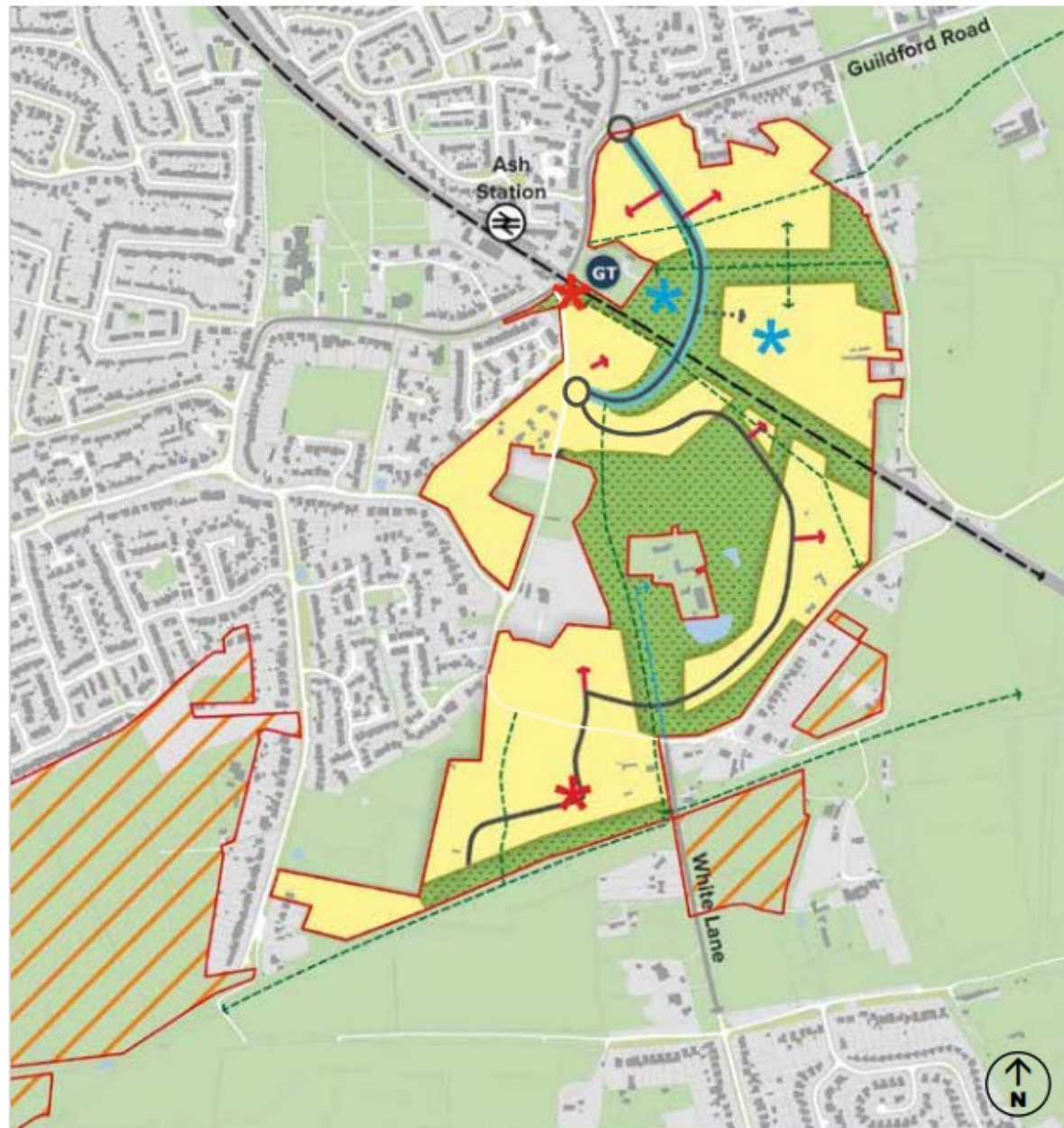


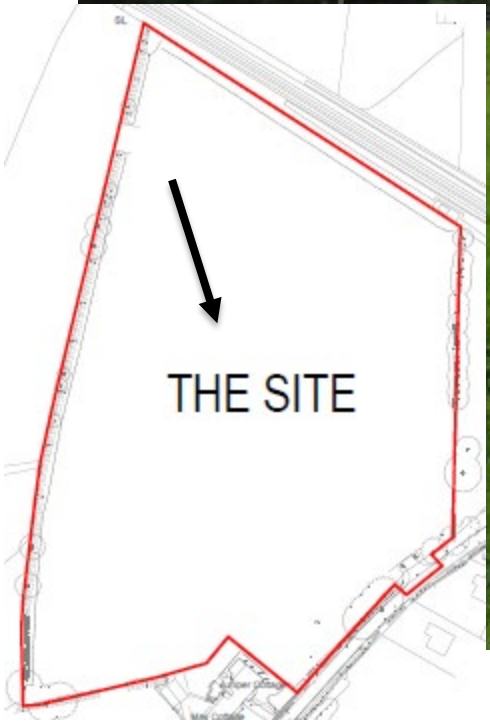
Fig 49: Illustrative application of development principles to Ash and Tongham



[Previous](#)

[Next](#)

[Home](#)



[Previous](#)

[Next](#)

[Home](#)



[Previous](#)

[Next](#)

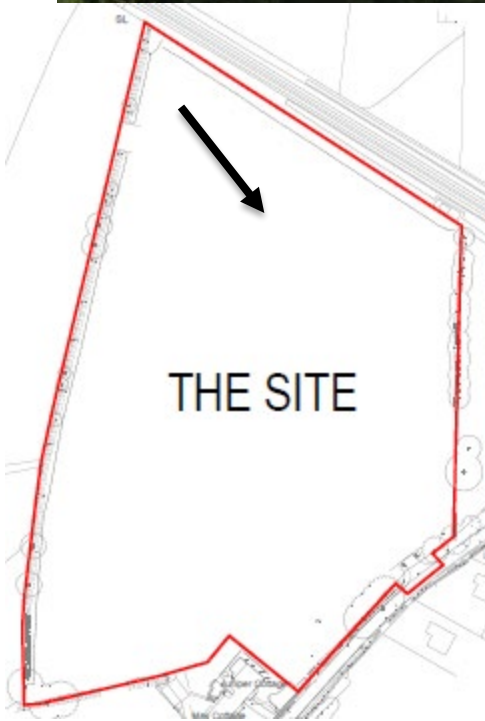
[Home](#)



[Previous](#)

[Next](#)

[Home](#)



[Previous](#)

[Next](#)

[Home](#)



[Previous](#)

[Next](#)

[Home](#)



[Previous](#)

[Next](#)

[Home](#)



[Previous](#)

[Next](#)

[Home](#)



[Previous](#)

[Next](#)

[Home](#)



[Previous](#)

[Next](#)

[Home](#)

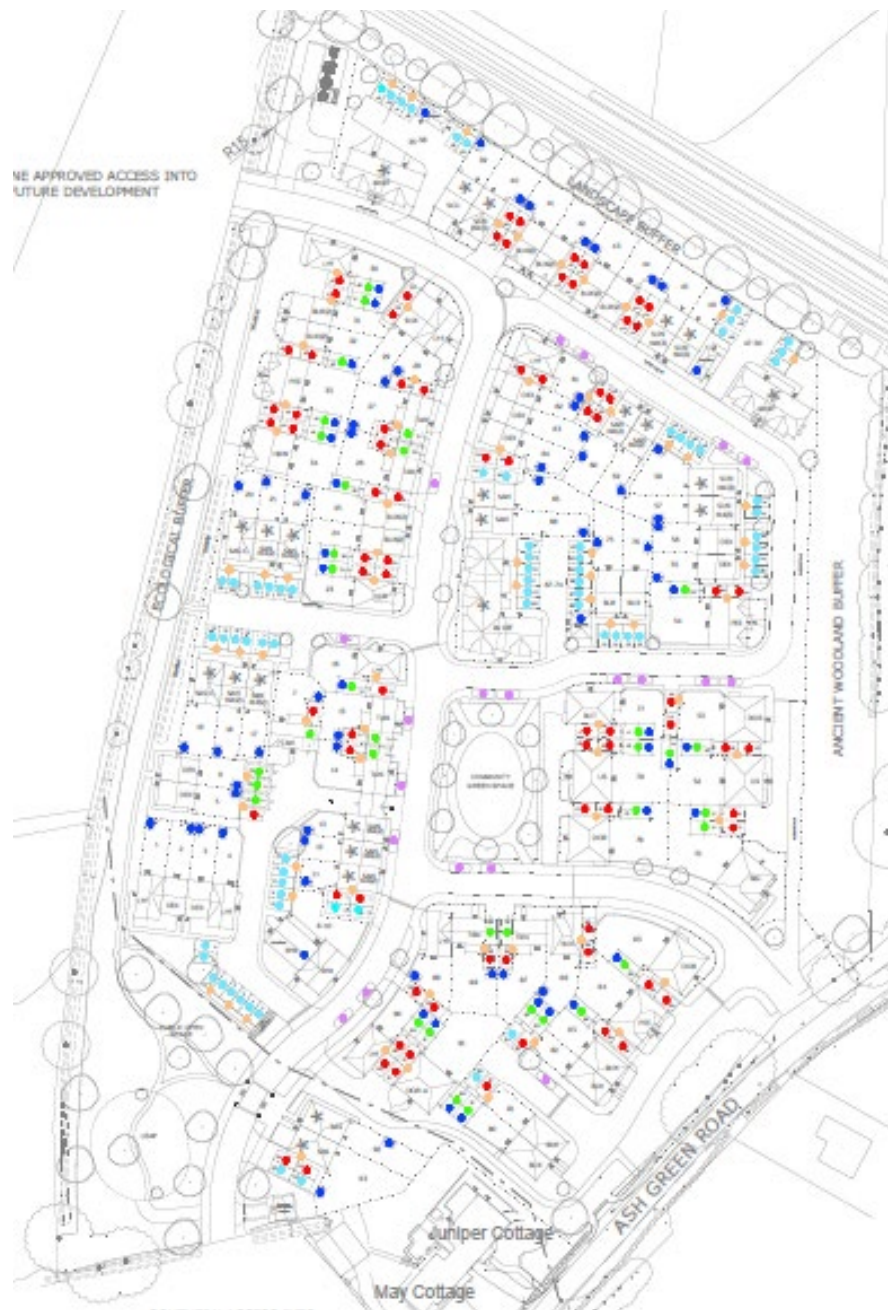


Site plan

[Previous](#)

[Next](#)

[Home](#)



Parking proposal

[Previous](#)

[Next](#)

[Home](#)



Tree protection plans

[Previous](#)

[Next](#)

[Home](#)

22/P/00738

Ipsley Lodge Stables

Hogs Back

Seale

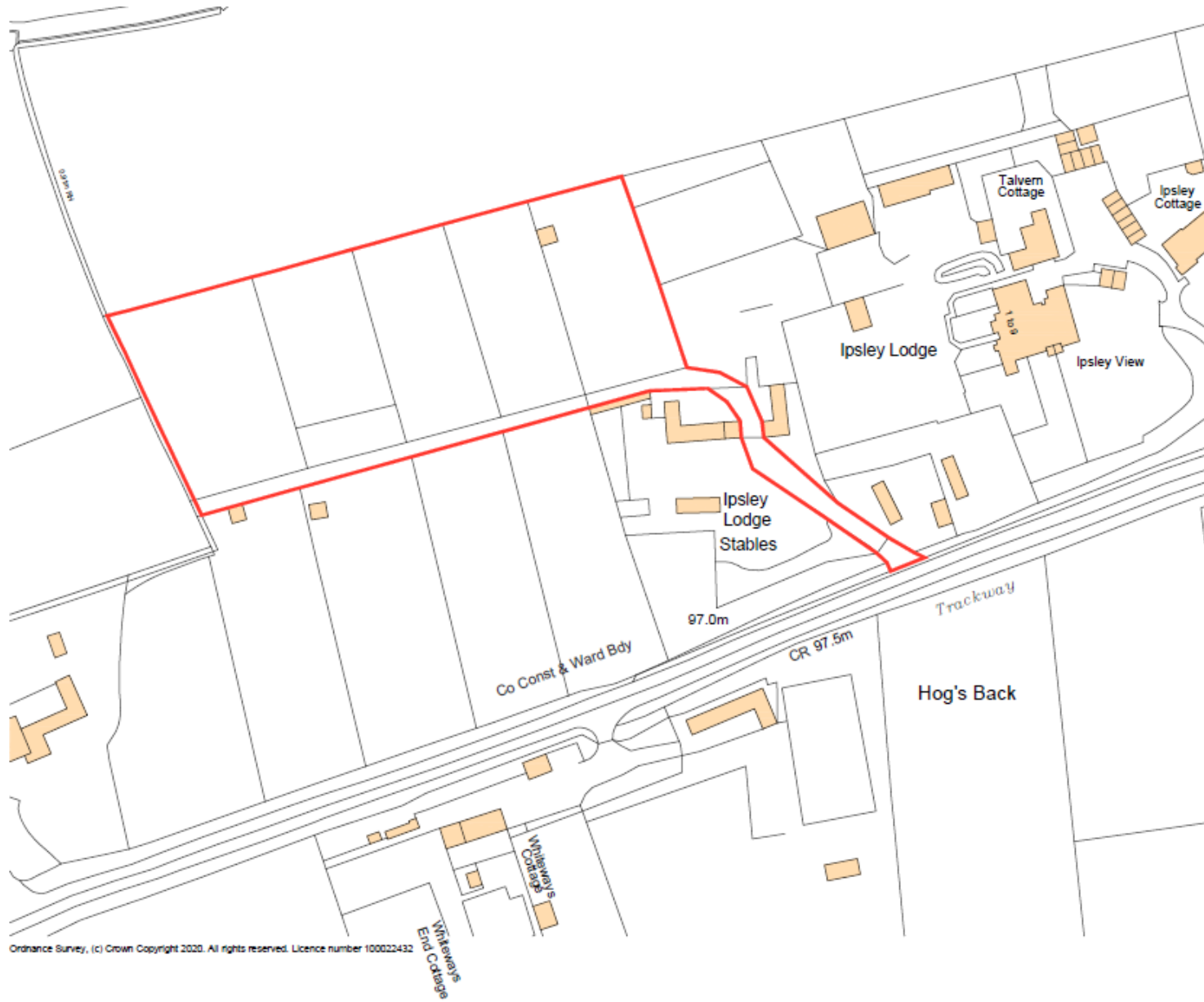
Guildford

GU10 1LA

[Previous](#)

[Next](#)

[Home](#)



Ordnance Survey, (c) Crown Copyright 2020. All rights reserved. Licence number 100022432

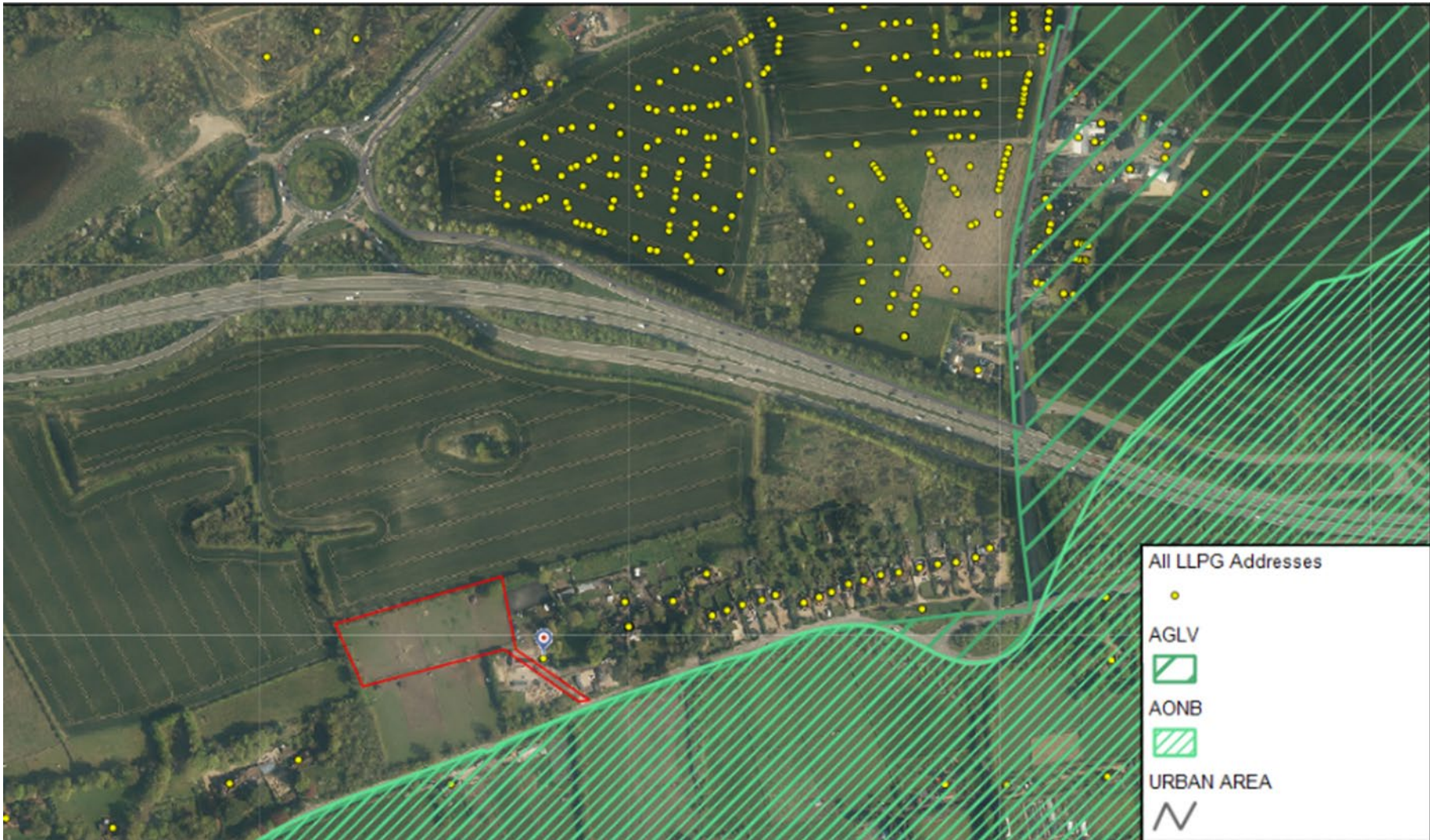
Site Location

[Previous](#)

[Next](#)

[Home](#)



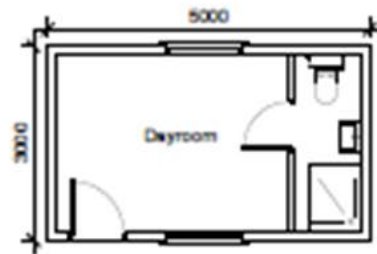
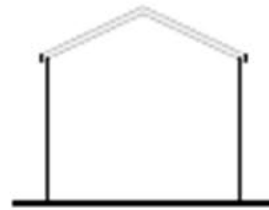
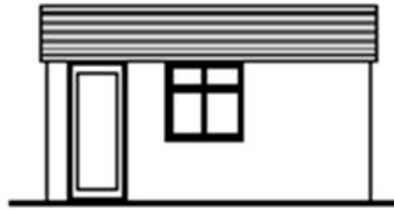
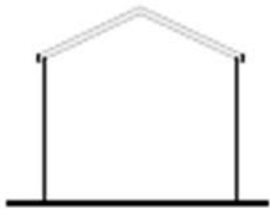


Aerial view

Previous

Next

Home





[Previous](#)

[Next](#)

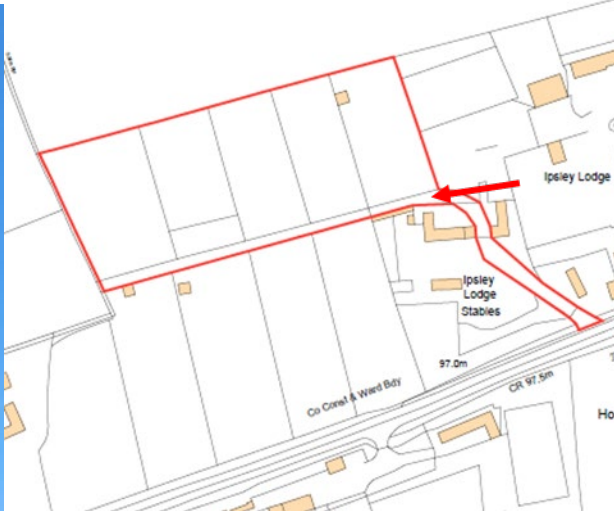
[Home](#)



[Previous](#)

[Next](#)

[Home](#)



[Previous](#)

[Next](#)

[Home](#)



[Previous](#)

[Next](#)

[Home](#)



[Previous](#)

[Next](#)

[Home](#)



[Previous](#)

[Next](#)

[Home](#)



[Previous](#)

[Next](#)

[Home](#)



[Previous](#)

[Next](#)

[Home](#)



[Previous](#)

[Next](#)

[Home](#)



[Previous](#)

[Next](#)

[Home](#)

